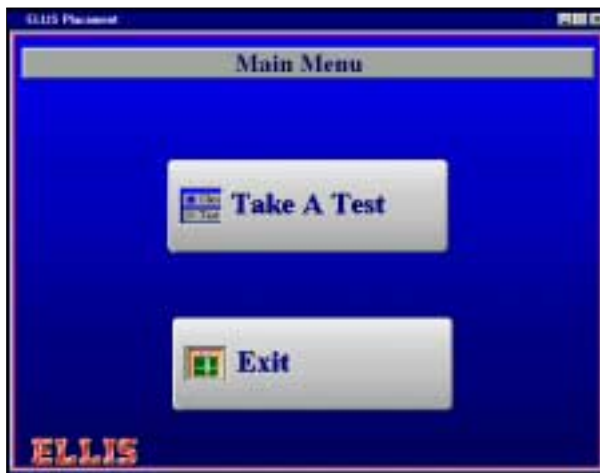


What is Ellis Placement?

ELLIS Placement is a program that does an initial learner evaluation and assesses learners' abilities in four skill areas: listening comprehension, reading, grammar, and vocabulary. To use ELLIS Placement, your learners must first be registered in Instructor Utilities. We recommend that you read the Instructor Utilities section to familiarize yourself with that program, before reading this section on ELLIS Placement.

Features

MAIN MENU



To start the Placement test, insert the Placement CD into the CD-ROM drive, click **Start | Programs | ELLIS | Placement** and then click **Take a Test** in the Main Menu.

LOG-IN



The learner must enter his or her **User ID**, which has been registered in Instructor Utilities, and press **Enter**. (See the section in Instructor Utilities for information about entering learner log-in identification.) The User ID “joe” can be used, but it may be difficult to find the test results, and it will not be possible to track the learner’s progress without the learner’s own User ID.



ELLIS PLACEMENT

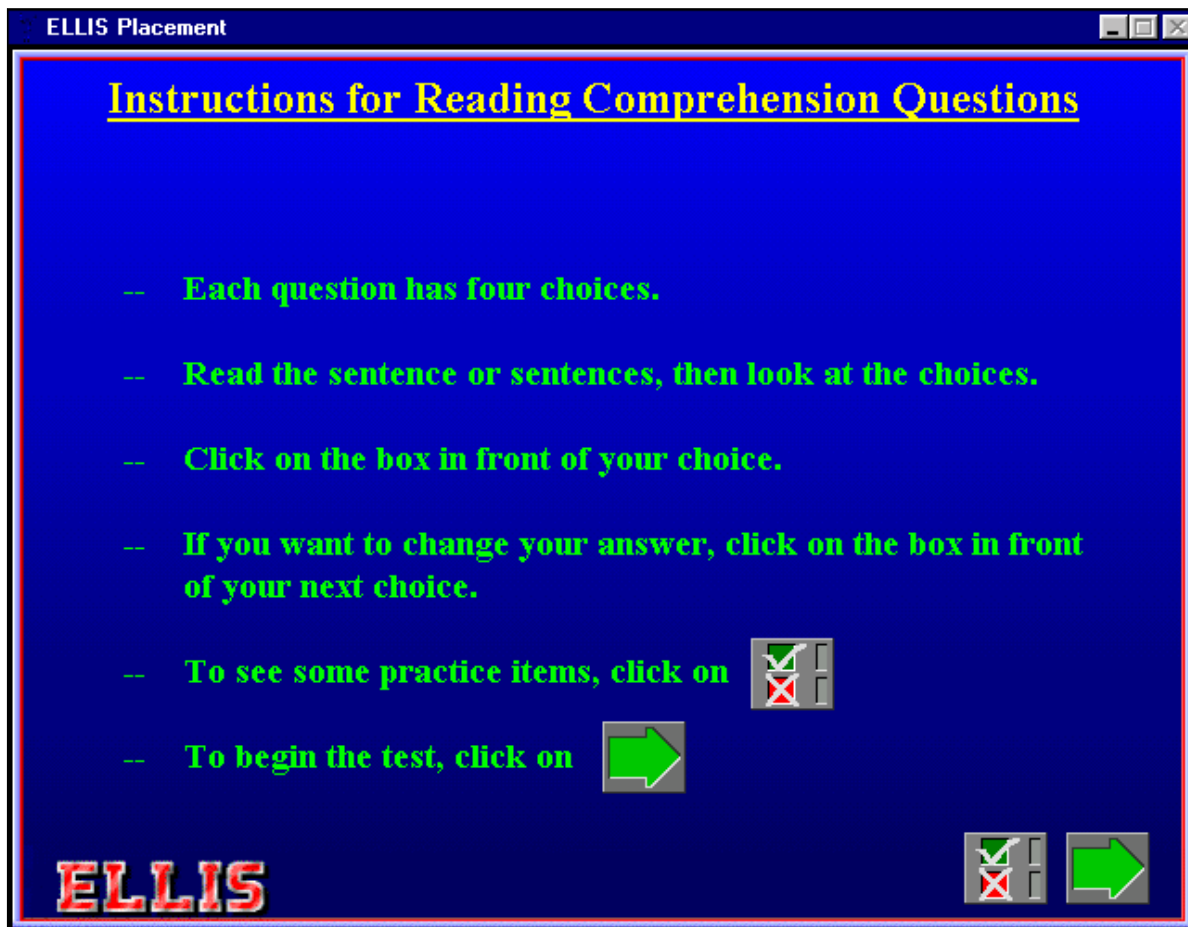
THE TEST

The test has four sections: vocabulary, reading, grammar, and listening comprehension. Each section has 15 multiple-choice questions, which are selected at random from a total of 1,008 questions.

Each question is ranked on a scale from one to 100, one being the easiest. Placement organizes the ranked questions and makes the test adaptive. Each skill test begins with three items ranked 49, 50, or 51. Based on the number of correct answers in that group of questions, the next group of three questions is more difficult (ranks 74,75, or 76) or easier (24, 25, or 26). The test continues this way until the ranks of the questions converge on a single-rank grouping. The last set of three questions is presented in the approximate skill level of the student.

INSTRUCTIONS SCREEN

Before each section of the test, there is a screen of instructions for the learner and the opportunity to practise two questions by clicking  or starting the test by clicking .



PRACTICE

In the Practice screen, after the learner has clicked an answer, he or she can get feedback that tells why the question was answered correctly or incorrectly by clicking the green arrow. Clicking the arrow again will take the learner to the next question.



TEST QUESTIONS

■ Time and Scoring

Each question has four choices, and the learner is required to answer within a certain amount of time. This time can be adjusted. See the “Setup-Placement” section in Instructor Utilities. Placement scores the last answer chosen before the allotted time expires, or before the learner clicks the “Next” button. If an answer is not chosen, the question is scored as incorrect.

■ Type of Questions

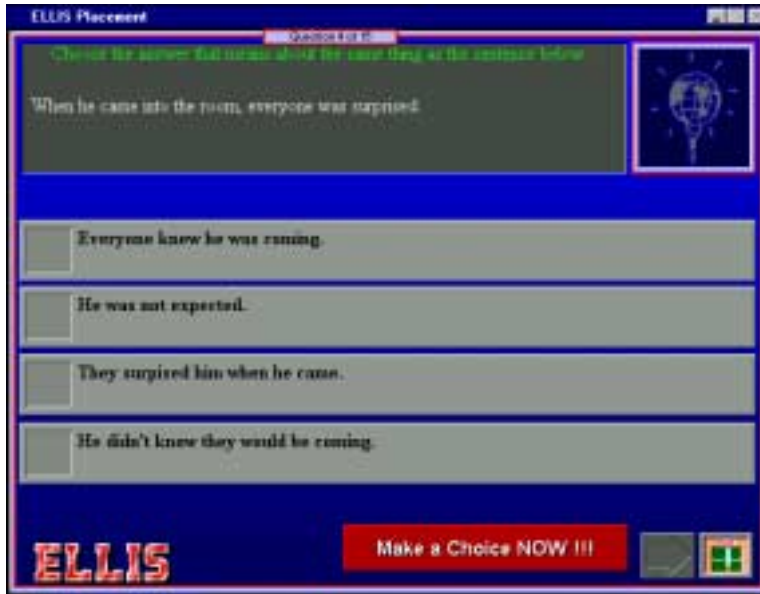
There are various question formats for each of the subjects.

- **Vocabulary**
 - Choose the word or phrase that fills the blank.
 - Choose the word or phrase that means the opposite of the underlined word.
 - Choose the word or phrase that means the same as the underlined word.
- **Reading**
 - Choose the answer with a similar meaning to the sentence provided.
- **Grammar**
 - Choose the word or phrase that fills the blank.
 - Choose the sentence that is in the correct order.
 - Choose the word that is the second word of the contraction.
- **Listening comprehension**
 - The audio for the listening comprehension questions plays only once. Then a question appears in one of the following formats:
 - Choose the best answer to the question you hear.
 - Choose the phrase that has the same meaning as the phrase you heard.
 - Choose the phrase or question that would follow in response to the phrase you heard.

ELLIS PLACEMENT

TAKING THE TEST

The learner must read the instructions, answer the question by clicking one of the choices, and advance to the next question by clicking the arrow at the bottom of the screen. After answering 15 questions in the first



section, the learner will be presented with questions in the next category, until all four sections have been completed. The test will take about 30 to 60 minutes.

■ Item Time Limits

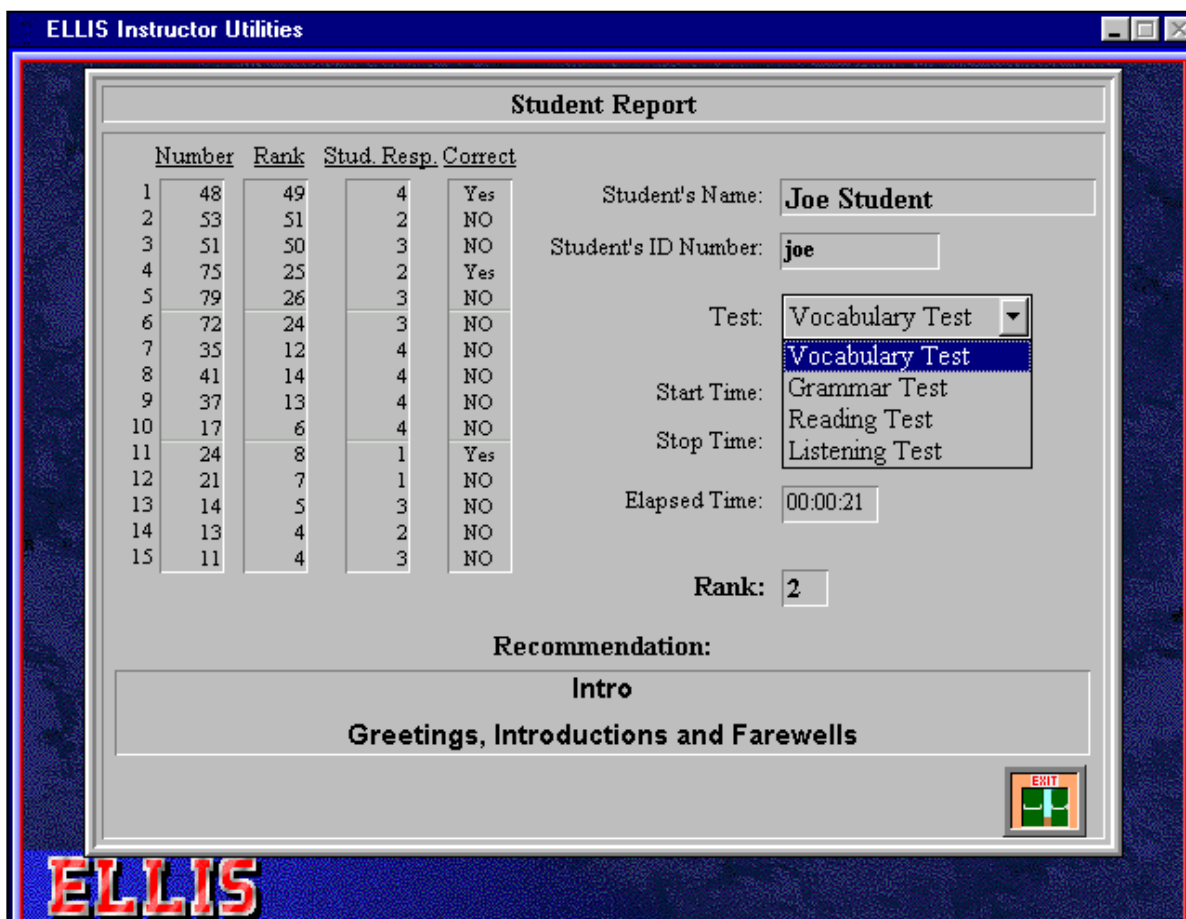
A “Make a Choice Now!!!” warning flashes if a choice has not been selected before the amount of time allotted for answering has expired. The default setting is 40 seconds for each question, with a warning being given five seconds before the time is up. The instructor can adjust the time limit on questions. See Setup-Placement in the Instructor Utilities section.

TEST RESULTS

■ To View Test Results

1. Open Instructor Utilities (click **Start** | **Programs** | **Instructor Utilities**).
2. Type the password (**letmein**) and click **OK**.
3. Click **Placement** under “View Reports on Screen.”
4. Click a student in the Select a Student window.
5. Click the date of the test and click **OK**. (See the Instructor Utilities section for information on viewing and printing reports.)
6. Click **Exit** to return to the Instructor Utilities main menu.

The report tells whether the learner was correct or incorrect for each question answered, gives a rank in each of the four categories (listening comprehension, reading, grammar, and vocabulary) and recommends a placement in ELLIS for each of the categories (the specific program and lesson).



The picture above shows a Student Report.

- **Number column:** gives the number of the question from the ELLIS Placement database.
- **Rank column:** gives the ranking of the question. The first three are always ranked around 50. If two of the three questions are answered correctly, Placement chooses the next three questions with a more difficult ranking. If two of the three are answered incorrectly, Placement assigns easier questions to the learner.
- **Student Response column:** shows which answer the learner chose.
- **Correct column:** shows whether the answer was correct or incorrect.
- **Test drop-down list box:** allows the instructor to choose one of the four categories to view.
- **Elapsed time:** shows how long the learner took to complete each section. This information may help determine if certain areas are more difficult for a learner or if the learner is guessing.
- **Rank:** the number in this box corresponds with the learner's ability at the end of the test. It represents the average question rank that the learner answered correctly, not the percentage of questions the learner answered correctly.

ELLIS PLACEMENT

■ Viewing Test Questions

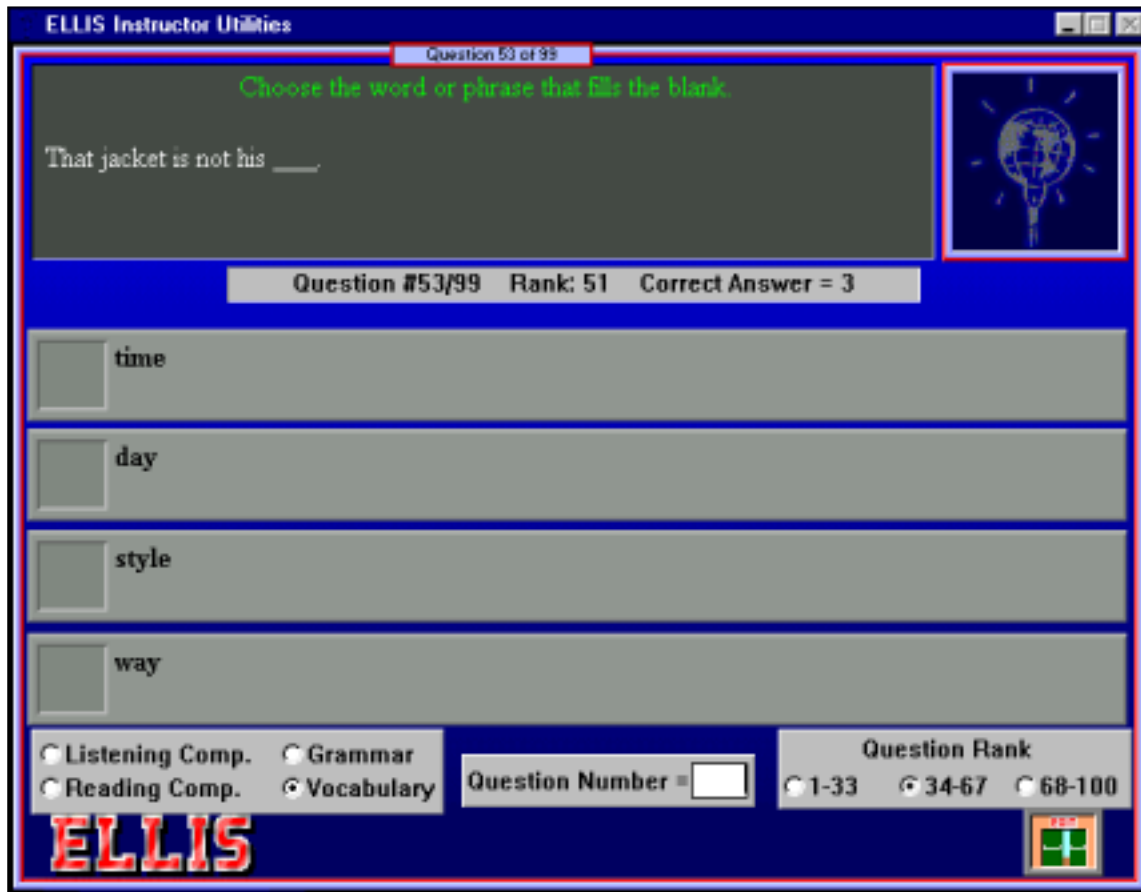
You may want to see a question that is listed in a Student Report.

To view any of the test items:

1. Open Instructor Utilities (click **Start** | **Programs** | **Instructor Utilities**).
2. Type the password (**letmein**) and click **OK**.
3. Choose **Viewing Placement Items** under the Utilities heading.

To select a question:

1. Click the **Question Type**.
2. Enter the Question Number.
3. Click the **Question Rank** and press **Enter**.



How to Use ELLIS Placement

We recommend using the Placement test for all LINC levels. You may be using a needs assessment to give you an idea of your learners' background and needs, and oral interviews and writing assignments to test their creative and discursive abilities. The Placement program is another tool that can be used in combination with those tools to assess learners' abilities in the four categories of listening comprehension, reading comprehension, grammar, and vocabulary.

Enter User ID in Instructor Utilities for each computer and assign a User ID to each learner when they begin using ELLIS. (See the Instructor Utilities section.) Because records are on specific computers, learners will have to use the same workstation each time they use ELLIS.

Prepare some sort of record keeping. Print reports for yourself and the learner. Keep a copy of the Placement results with the learner's registration form, or in a file that can be accessed by other instructors. If the learner is promoted from one class to another, the next teacher should have access to that information.