

What are ELLIS Middle and Senior Mastery?

ELLIS Middle Mastery is a multimedia program designed to help intermediate learners improve their communication skills and prepare them for advanced instruction. ELLIS Senior Mastery is a program for advanced learners to help them prepare for TOEFL and achieve fluency. There is a strong focus on grammar and conversational skills in both programs.

Learners watch and listen to a variety of social situations on a video. They can stop or repeat a scene and view the text of the scripts as they are acted out. They can also record their own voices for comparison with those of native speakers. In addition, there are activities for vocabulary, idiomatic expressions, grammar, culture, listening comprehension, and pronunciation.

Some features of ELLIS Middle and ELLIS Senior Mastery are the same as those in ELLIS Intro. If you are new to ELLIS, we recommend that you read the LINC One, Two, and Three sections on ELLIS. However, the Main Menus are different. In Intro all activities are accessible from the Main Menu, there is minimal text, and learners work from left to right in each theme. In Middle and Senior Mastery the learner chooses a theme as well as either a communicative or grammatical objective in the Main Menu. Then there is a lesson menu in which the learner must make more choices. Once the lesson has begun, the learner progresses from the top menu item to the bottom, not left to right.

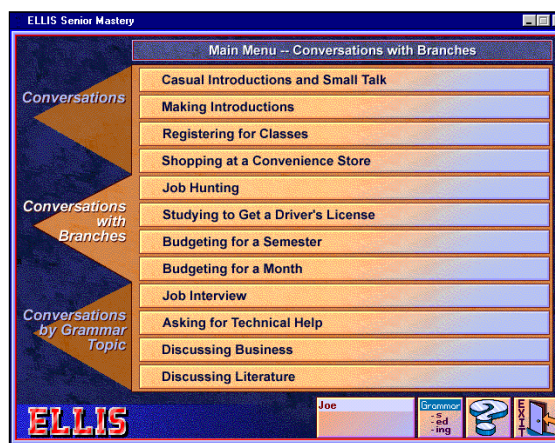
One new feature in Middle Mastery and Senior Mastery is the Grammar Guide, which introduces the grammar structure and provides rules and examples. Another new feature is the Grammar Tutor, which is an on-line tutorial that gives extra grammar instruction, as well as opportunities to practise, with feedback provided. It is available only in Middle Mastery.

Features

MAIN MENU



Middle Mastery



Senior Mastery

5 • ELLIS MIDDLE AND SENIOR MASTERY

The Main Menu is the first screen that appears after the learner has logged-in. The learner can take three approaches to Middle and Senior Mastery lessons:

- **Conversations**

The same conversations appear each time they are accessed.

- **Conversations with Branching**

A video segment appears, followed by a list of choices in script. The outcome of the video depends on the learner's choice. For example in Middle Mastery theme 5, lesson 5 (Asking someone on a date) Pauline asks Mark, "Do you want to go out Friday night and celebrate?" The learner can choose either "Yes. What time?" or "No, I can't." Once a choice has been made, the video continues, using that script.

- **Conversations by Grammar Topic**

Learners can watch video segments that illustrate specific items of grammar. For example, in Senior Mastery, if a learner chooses to study comparatives, the video, "Making Introductions", appears. Its script contains comparisons and also links to grammar pages on this topic.

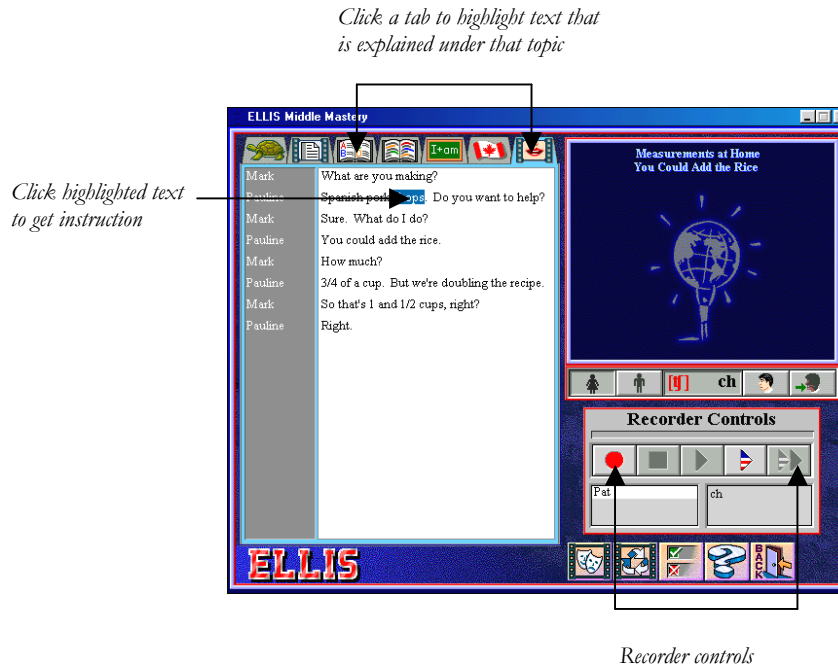
LESSON MENU

After a theme is selected, the Lesson Menu appears. As in the Main Menu, learners can choose between Conversations, Conversations with Branching and Conversations by Grammar Topic. Clicking on a lesson will start a video and display a script page. Tests are available for each lesson. Test 1 covers the first one or two lessons, the second covers the other lessons, and Test 3 covers the entire theme. (An explanation of the tests and their format is in the LINC Three section.) The green diamond indicates which lessons a student has entered.



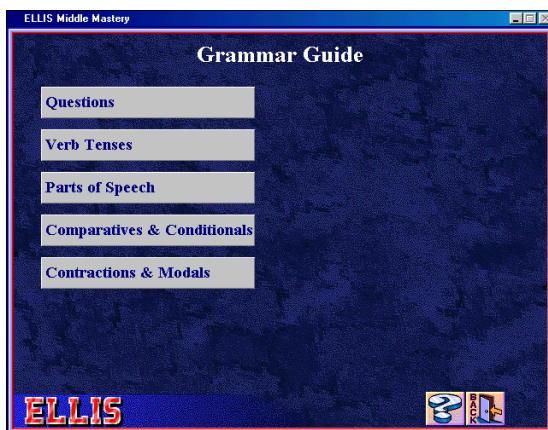
SCRIPT PAGE

Clicking an icon (or tab) on the script page will take the learner to a script-related activity. For an explanation of the script page, refer to the LINC Two ELLIS section. Note also the explanations of the Recorder Controls and Practice Items in the LINC Two section and Role-Play in the LINC Three section.

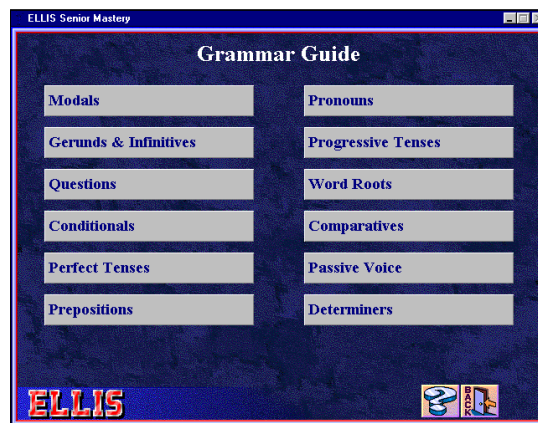


GRAMMAR GUIDE

Clicking on the Grammar Guide button in the Main Menu accesses the Grammar Guide menu. When the learner chooses a topic, he or she is then presented with the appropriate pages in the Grammar Guide.



Middle Mastery

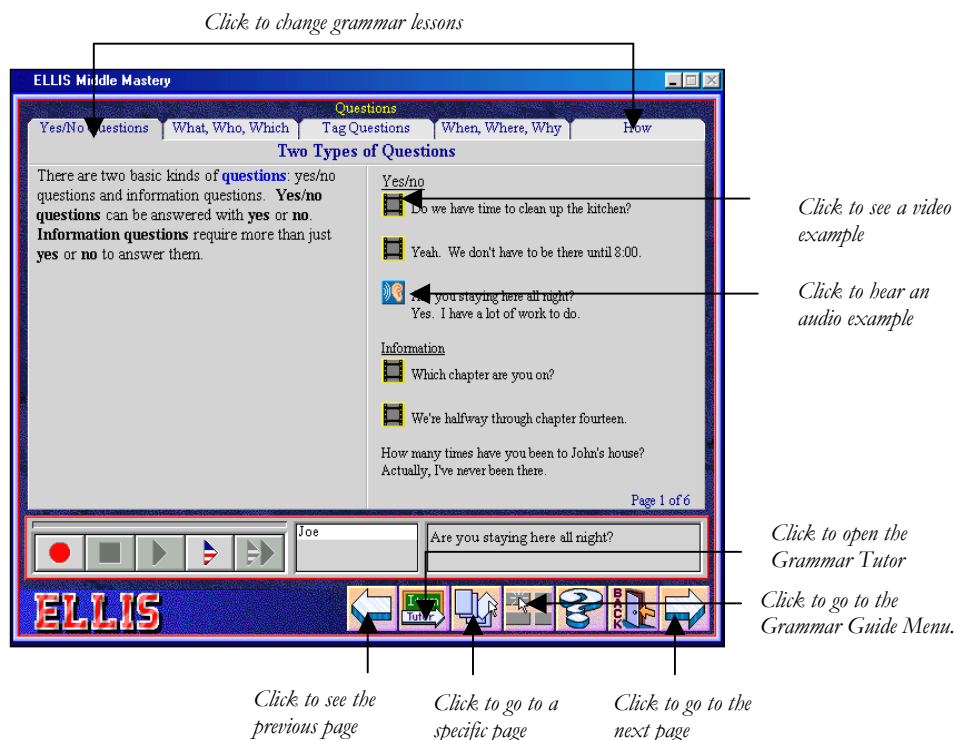


Senior Mastery

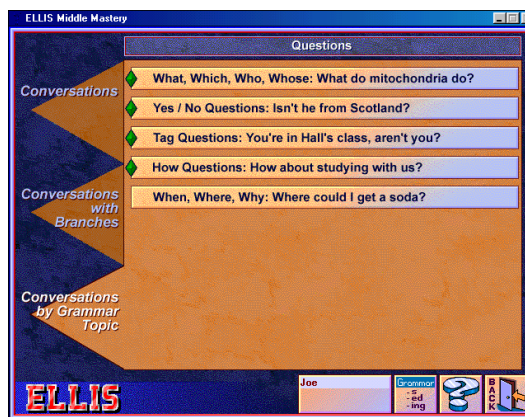
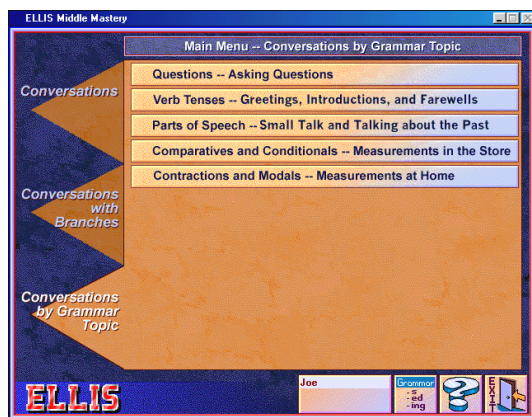
5 • ELLIS MIDDLE AND SENIOR MASTERY

■ Grammar Guide Page

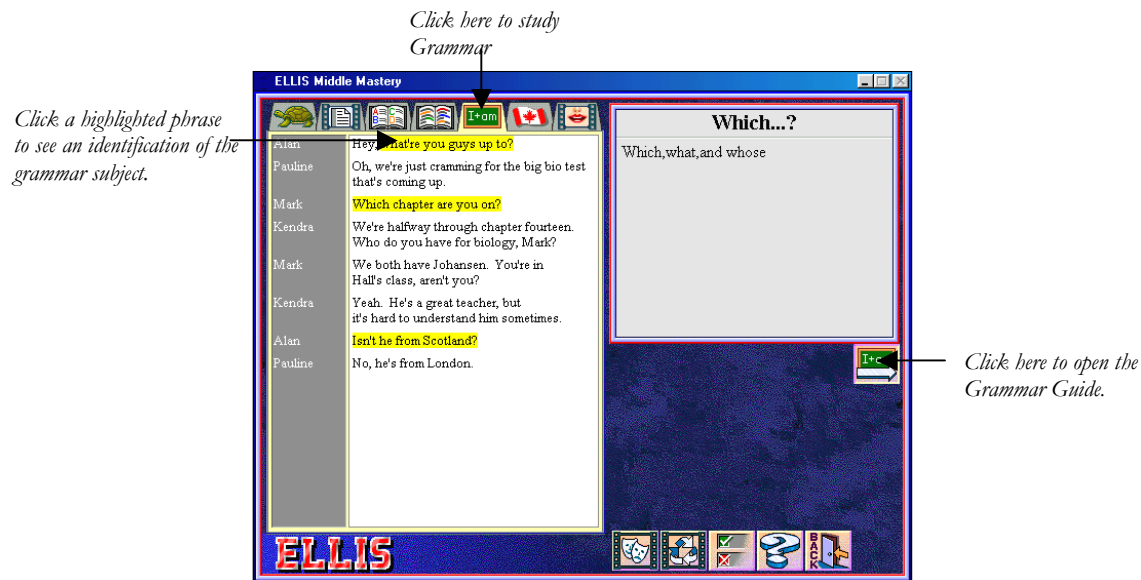
The left side explains the form, use, and rules of the grammar topic. The right side contains video and audio examples of the grammar item. The learner can change pages by clicking the appropriate symbols, or can change grammar topics by clicking a tab at the top of the screen. The recorder box appears after an audio or video has been shown, giving a learner an opportunity to record his or her voice and compare it to ELLIS.



The Grammar Guide can also be accessed through “Conversations by Grammar Topics” on the Main Menu. After choosing a grammar topic, the learner is presented with a second menu, from which he or she must choose a specific area.



A video and script are then displayed. The video has examples of the grammar point, and by clicking on the **grammar** icon at the top of the page, the learner can access text examples, highlighted in the script. Clicking on one of the highlighted examples will display a brief identification of the grammar subject on the right side of the screen.



Clicking the **Grammar Guide** button takes the learner to the specific page that provides instruction for that topic. For example, clicking the Grammar Guide on the above script page takes the learner to a page on “What” questions.

GRAMMAR TUTOR

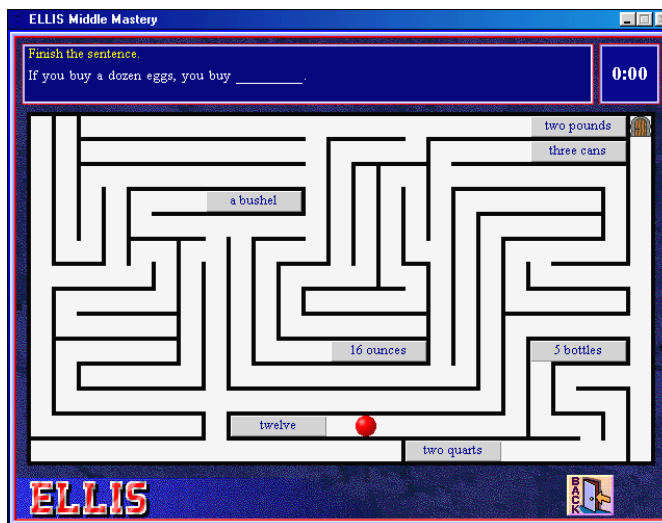
The Grammar Tutor accesses simplified grammar instruction with video clips, graphics, and practice activities that provide immediate feedback. Clicking the **Grammar Tutor** button at the bottom of the Grammar Guide screen can open this feature, which is on Middle Mastery only.



5• ELLIS MIDDLE AND SENIOR MASTERY

GAMES

Each theme has a game, which can be opened by clicking on **Game** on the Main Menu. The game consists of a series of five mazes that are designed to be a review of vocabulary, phrases, and grammar. To play the game the learner must use the arrow keys to move a ball through the maze to the correct word(s), in the correct order, to complete the sentence at the top of the screen. When the sentence has been completed, the learner must then get through the maze to the door and thus to the next maze. You cannot advance to the next game until the first one has been completed. A timer at the top of the screen counts the time taken to complete the task.



PRACTICE ITEMS

Clicking the **Practice Items** icon at the bottom of the script page accesses questions covering each subject in ELLIS: vocabulary, phrases, culture, grammar, listening comprehension, and pronunciation. The type of question depends on the subject icon selected when the learner opens Practice Items.

An explanation of the format and features of Practice Items appears in LINC Two. The format remains the same in all ELLIS programs, but Middle Mastery and Senior Mastery do have one extra feature. It is a box containing columns of one, two, and three arrows at the bottom of the Practice Items screen that allows the learner to choose questions from three levels of difficulty by clicking on the columns.



How to use ELLIS Middle and Senior Mastery with LINC Five Learners

Although the manufacturer of ELLIS describes Middle Mastery as being for intermediate learners, and Senior for advanced, the themes of both are appropriate for LINC Five learners. We recommend using either program to complement the theme or grammar point you are teaching.

Familiarize learners with the structure of ELLIS in these programs, namely choosing Conversations, Conversations with Branches, or Conversations by Grammar Topic. Explain and walk learners through a demonstration of a theme, using all three ways of accessing videos.

Explain the icons that appear on the script page and provide a reference page or wall chart that learners can refer to. Make sure learners know how to use these icons to access the activities associated with each theme. It is also important that learners know how to use the recorder controls for recording their own voices and comparing with ELLIS. Remind them as well about the Help feature that may be available in their language. It is a useful tool for recalling what the icons are for. (Note that there is no native language assistance in Senior Mastery.) See the ELLIS Intro section in LINC Two for a description of the icons and the recorder controls.

The questions in both Practice Items and Tests are lesson-specific, so it is recommended that learners study all branches in each lesson before doing either of these activities. One new feature in Practice Items is a box, consisting of columns of one, two, or three arrows, which allow the learner to choose more difficult questions.

Prepare a chart that contains all the activities available for each theme, and a place to check off when they have been completed. This acts as a reminder of everything that should be completed before the Tests or Practice Items are done.

Learners at this level will appreciate tracking their own progress. Before learners come to the lab, enter their names into the Instructor Utilities and plan what workstations they will use. Make use of the Placement test to assess learner's English skills, and print student reports for your learners at regular intervals. (See Before Using Software.)

The scripts and discussion questions that relate to the themes are available in the ELLIS Middle Mastery and ELLIS Senior Instructor Guides that should be at your centre. The Instructor Guides also include Scope and Sequence Charts that detail the grammar, communication, culture, and pronunciation focus for each theme. By referring to the charts you can easily find a lesson in Middle or Senior Mastery that will complement a theme you are teaching. In addition, there are also Learner Response Books that have written exercises for learners.

5• ELLIS MIDDLE AND SENIOR MASTERY

Suggested activities

1. **Writing a dialogue:** Ask learners, in pairs, to write their own script for a situation, using an ELLIS script as a model. They then act it out for the class.
2. **Writing a dialogue with choices:** Ask learners, in pairs or groups, to write their own script for a situation, as above, but this time they will need three possible endings. When they act it out the class can choose an ending.
3. **Re-enactment:** After learners have completed all the activities in a theme, have them, in groups, re-enact the same situation. They can try to remember the ELLIS script or make up their own.
4. **Giving and Responding to Invitations:** Learners give invitations to each other and accept or refuse, using phrases from ELLIS (a follow-up to Middle Mastery-Theme 5, Asking Questions).
5. **Introductions:** Learners introduce each other, have a short conversation, and then say goodbye (a follow-up to Middle Mastery-Theme 4, Greetings, Introductions, and Farewells).
6. **Ask for directions:** Have learners, in groups, generate questions about services available in the school or community (a follow-up to Middle Mastery-Theme 5, Asking Questions). They then practise asking others these questions. This could be used in conjunction with themes in the LINC 5 Curriculum Guideline, for example, asking about social services (Community and Government theme) or driving, cities and places of interest (Travel and Transportation theme).

Curriculum-unit-related activities

The following activities from ELLIS Senior Mastery tie in with the units specified in the LINC Five Curriculum Guidelines.

Unit	Topic	Ellis Senior Mastery Theme
Business	Team Building	Discussing Business
Education	Post-Secondary Education	Registering for Classes
Employment	Job Search Resources	Job Hunting: “I’m looking for a job as a waiter.”
Relationships	Conflict Resolution	Discussing Business

5• ELLIS MIDDLE AND SENIOR MASTERY

Checklist for Learners

Skills Level

Function

How to...

1	Open ELLIS program	Insert CD, Click Start Programs ELLIS ELLIS Intro .
1	Log-in	Type joe or User ID . Press Enter . Click OK .
3	Log-in more than one learner	Type User ID . Press Enter . Type second User ID , press Enter . Type third User ID , if applicable. Press Enter . Click OK .
1	Return to the Main Menu	Click Back .
1	Exit ELLIS	Click Exit .






Mouse Skills

1	Point	Move mouse on screen until the desired area is highlighted.
1	Click	Press and release the left mouse button.
2	Drag	Press and hold the left mouse button while moving the mouse to a new location; release the left mouse button.

Help


1	Open Help	Click ? Click on an area on the screen.
1	Open Help in learner's language (in Middle Mastery)	Click ? Flags icon. Choose a language. Click an area on the screen.
1	Close Help	Click ?

Recorder Controls




1	Record voice	Click 
1	Stop recording	Click 
1	Play back voice	Click 
1	Hear ELLIS	Click 
1	Compare voice with ELLIS	Click 

Script Page

2	Hear a line spoken slowly	Click Turtle . Click on a line of the script.
----------	---------------------------	--

Skills Level	Function	How to...
2	See a video of a line	Click Video icon. Click on a line of the script.
2	Study vocabulary	Click Dictionary icon. Click on a highlighted word.
2	Study phrases	Click Book icon. Click on a highlighted phrase.
2	Study grammar	Click Grammar icon. Click on a highlighted word or phrase.
2	Study culture	Click Canadian flag . Click on a highlighted word or phrase.
2	Study pronunciation	Click Pronunciation icon. Click on a highlighted word.
2	Watch the video again	Click 
2	Close the script	Click Back .



Practice Items

2	Open Practice Items	Click  Click the answer.
2	Go to Practice Items menu	Click  Click the desired subject.
4	Choose more difficult questions	Click 
2	Close Practice Items	Click Back .

Games

2	Play a game	Click Game . Use the arrow keys to move the red ball to the correct words in order to complete the blanks in a sentence. Then use the arrow keys to move the red ball through the maze to the door in the top right-hand corner of the screen. Repeat for other four mazes.
2	Close a game	Click Back .

Role Play




3	Do a role play	Click  Choose a character. Click ➡. When character's script appears, read and record voice using recorder controls. Click ➡ to continue.
3	Watch video with learner voices	Click 

Skills Level	Function	How to...
--------------	----------	-----------



Tests

3	Take a test	Click Test . Click the answer.
3	Close a test	Click Back .

Grammar Guide

4	Open Grammar Guide	Click Grammar icon on Main Menu. Select a topic. ■ Click Grammar icon on script page. Click a highlighted word. Click Grammar icon on the right of screen.
4	See a video example	Click 
4	Hear an audio example	Click 
4	Go to a specific page	Click  Page number.
4	Choose a different topic	Click a tab at the top of the screen.
4	Close Grammar Guide	Click Back .

Grammar Tutor (Middle Mastery)

4	Open Grammar Tutor	Click Grammar Tutor icon in Grammar Guide.
4	See a video of the example	Click 
4	Hear an audio of the example	Click 
4	Close Grammar Tutor	Click Back .