

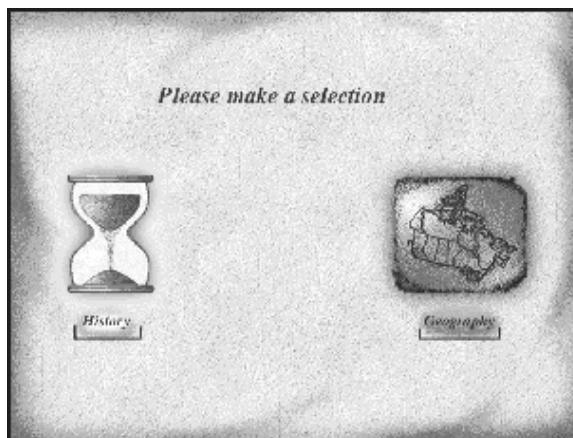
### What is Explore Canada?

Explore Canada is a multimedia educational program about the history and geography of Canada.

### Features

#### MAIN MENU

There are two main menus in Explore Canada: **History** and **Geography**. The History and Geography topics are divided into sections that cover historical periods and regions of Canada.



Explore Canada Topics

■ **The History Main Menu** consists of the following six sections:

- Early History
- Colonial Period
- Canada Grows
- Explorations
- Confederation
- Canada Today



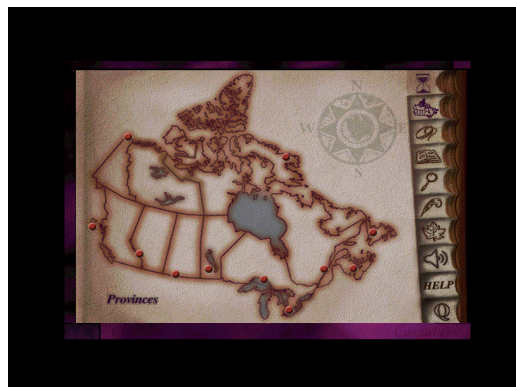
History Main Menu

The Geography Main Menu has two sections:

#### Provinces and Regions.

■ **The Regions (default) section** consists of the following six subsections:

- Western Mountains
- Prairies
- Canadian Shield
- St. Lawrence Lowlands
- Atlantic
- Arctic



Geography Main Menu

# 1 • EXPLORE CANADA

■ The **Provinces** section can be accessed by clicking on Provinces on the lower left corner of the Geography Main Menu and consists of the following subsections:

- British Columbia
- Alberta
- Saskatchewan
- Manitoba
- Ontario
- Quebec
- New Brunswick
- Nova Scotia
- PEI (Prince Edward Island)
- Newfoundland
- Nunavut (new Explore Canada version only)
- NorthWest Territories
- Yukon



Provinces Main Menu

## PRESENTATION WINDOW

Clicking on any of the above sections will take you to a **Presentation Window** that has text at two levels of difficulty: **Level 1** and **Level 2**. For detailed explanation of a presentation window, see LINC Two.

Explore Canada comes with Tutorial, Mouse Tutorial, and a variety of features such as Dictionary, Help, Index, a text editor called Writing Pad, and a feature called About Canada. Each of the above features is represented by an icon on the vertical toolbar area on the right side of any window. As your mouse points to an icon, the name of that icon appears on the top left corner of the screen. We will explain how each icon works in the coming LINC levels.



A Presentation Window

Vertical toolbar

## What is Explore Canada?

Explore Canada is a multimedia educational program about the history and geography of Canada.

The features in this section build on those discussed in the previous level. If you are new to Explore Canada, we recommend that you read the Explore Canada section in LINC One before reading this section.

## Features

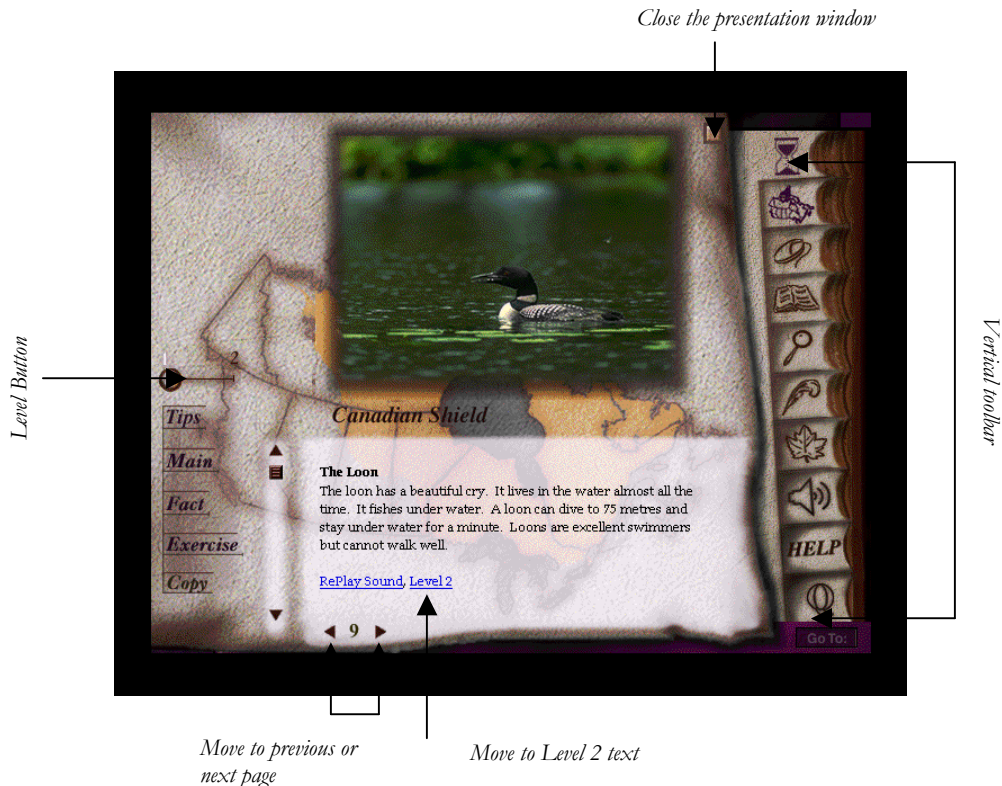
### HISTORY AND GEOGRAPHY SECTION STRUCTURE

Clicking on a section in the History or Geography Main Menu (see LINC One) opens the presentation window for that section.

■ **Presentation Windows include text at two levels of difficulty:**

- **Level 1**--a brief text with audio and replay capabilities
- **Level 2**--longer text with no audio

Each level includes vocabulary underlined in blue. Clicking on these words (hyperlinks) opens a Dictionary window with the pronunciation and explanation of the word. Clicking on the word in the Dictionary window repeats the audio (pronunciation).



# 2. EXPLORE CANADA

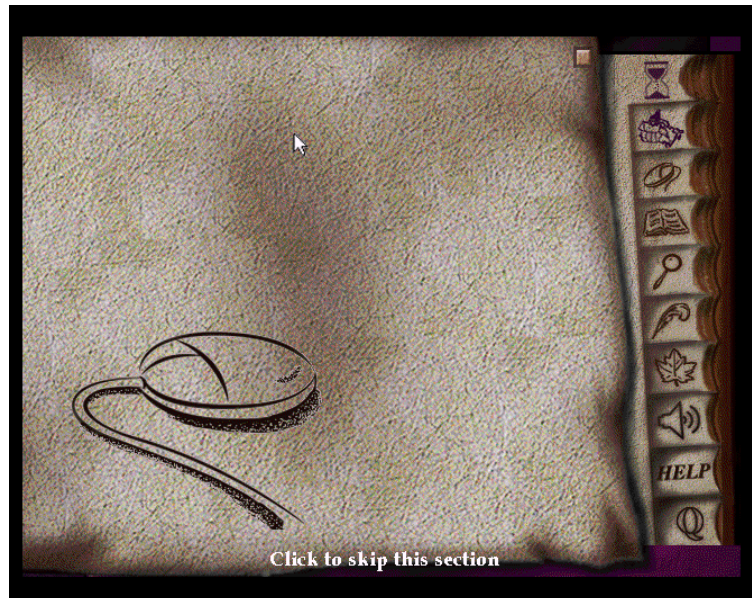
## ■ Parts of a Presentation Window:

- To enlarge the picture to a full screen, click on the picture. Click it again and it will shrink to original size.
- **Move to next or previous page:** click on the ► or ◀ (to the right and left of the page number).
- **Move to the next or previous page in Level 2:** click on ► or ◀. This takes you back to the corresponding pages in Level 1. Click on **Level 2** to return to Level 2.
- **Close a presentation window:** click on the □ on the top right corner of the presentation window.
- **Level button:** to go to Level 2, drag the Level button to position “2” or select Level 2 at the bottom of Level 1 screen.
- **Tips:** click on **Tips** for a brief tutorial on all the functions in a presentation window. Click anywhere in the window to get back to the presentation window.
- **Main:** click on **Main** to return to the History or Geography Main Menu.
- **Fact:** click on **Fact** to see a list of additional facts about that section. You get the same list for all the presentation windows in a section.
- **Exercise:** there are two exercises: Text exercise and Map exercise. These exercises are discussed in LINC Four level.
- **Copy:** copies the text in the presentation window into the Writing Pad.

## MOUSE TUTORIAL

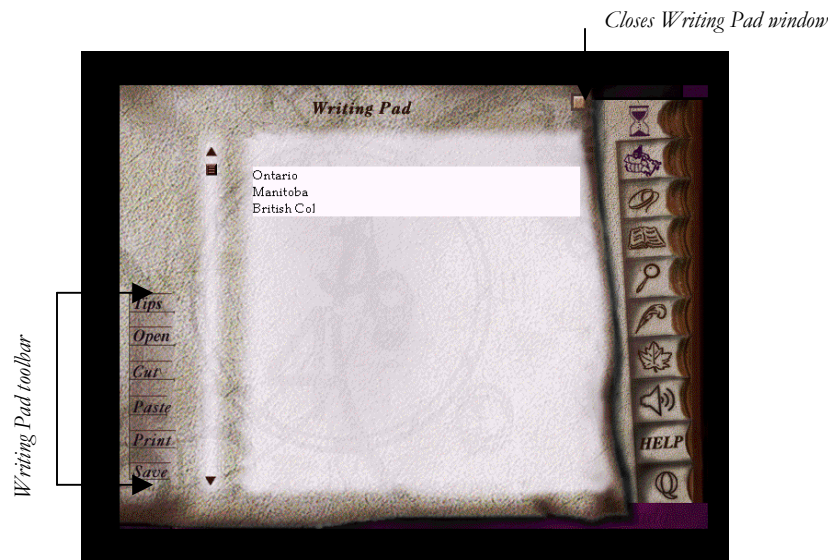
The Mouse Tutorial is an excellent tool for learners to acquire vocabulary and practise clicking and dragging. We recommend that this tutorial be used as a practice tool and as a follow-up to the instructor’s orientation to the mouse.

- Clicking anywhere in the tutorial window takes you back to the main menu.
- Mouse Tutorial can be accessed as many times as the learners wish.
- The tutorial allows the learners to practise clicking and dragging (only when prompted).



**WRITING PAD**

Use the Writing Pad to practise newly learned vocabulary related to presentation windows. The Writing Pad's contents will not be lost as long as you have not quit Explore Canada. Learners can print the text (new Explore Canada version) or save it and open it in a word processor (e.g., Word) to be printed. See the checklist for how to use the Writing Pad.



In addition, learners can open a previously saved file in the Writing Pad and continue working on it.

■ **Writing Pad toolbar**

- **Tips:** a mini-tutorial to the Writing Pad screen
- **Open:** opens a text file into the Writing Pad
- **Cut:** moves text to the clipboard
- **Paste:** pastes cut or copied text to the Writing Pad
- **Print:** prints text in the Writing Pad (new version only)

**PRINT**

The print function is only available in the Writing Pad which means you can only print text once you have pasted it into the Writing Pad. If this method does not work in your lab, an alternative is to save your text in the Writing Pad, open, and print it in another environment (e.g., Word).



The new version of Explore Canada supports printing in the Writing Pad. You can exchange your old CDs for the new version of Explore Canada. See the Introduction for ordering information.

## What is Explore Canada?

Explore Canada is a multimedia educational program about the history and geography of Canada.

The features in this section build on those discussed in previous levels. If you are new to Explore Canada, we recommend that you read the Explore Canada sections in previous LINC levels before reading this section.

## Features

### TUTORIAL/INTRODUCTION

The Tutorial is a brief explanation (about three minutes) of the main sections of Explore Canada presented in audio. All the learner has to do is click **Yes** when opening Explore Canada to access the Tutorial. This is a good follow-up to the instructor's presentation and can be repeated as many times as the learners wish (at the end of the Tutorial, there is a prompt asking if the Tutorial is to be repeated).

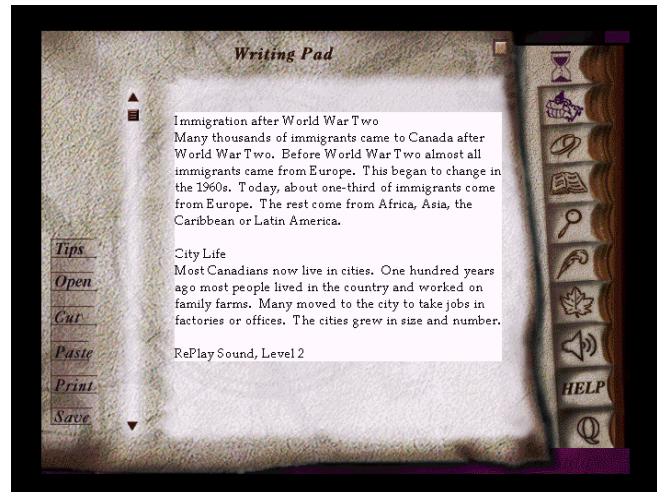


#### ■ Tutorial properties:

- Clicking anywhere in the Tutorial window takes you out of the Tutorial and back to the main menu.
- Repeat as many times as you wish by clicking **Yes** at the end of the Tutorial.
- You cannot access the Tutorial once you have skipped it. You need to close and re-open Explore Canada to access it again.

### WRITING PAD

You can copy any Level 1 or 2 text from a presentation screen and paste into the Writing Pad. You can paste as many pages as you like and save them all as one file. All you need to do is move the cursor to the bottom of the existing text in the Writing Pad before pasting new text. For example, you can copy text from one presentation screen, place the cursor at the bottom of the text, and copy text from the second presentation screen (see Skills Checklist). You'll see that text from both windows is copied into the Writing Pad (see picture). The Writing Pad's contents will not be lost as long as you leave Explore Canada open. Even if you close the Writing Pad and move on to other sections or windows, your text will not be lost.



In the new version of Explore Canada, learners can print directly from the Writing Pad. In the old version of Explore Canada, learners need to save the text, open, and print it in a word processor such as Word.

# 3 • EXPLORE CANADA



Files from Explore Canada are saved in plain text (.txt) format. Once a file is opened in Word, you can save it in Word format and enhance its appearance.

## DICTIONARY

The dictionary consists of alphabetical listings of the underlined words in all presentation screens. By default, the listing begins with the letter “A.” You can see a new listing by simply clicking on a different letter of the alphabet at the bottom of the Dictionary Window (see picture). Each word is hyperlinked to its pronunciation and definition. The pronunciation can be repeated by clicking on the word in the Dictionary Definition Window (see picture).



*Dictionary Window*

In addition, it is possible to access the dictionary by clicking the underlined words (hyperlinks) in the presentation screens.



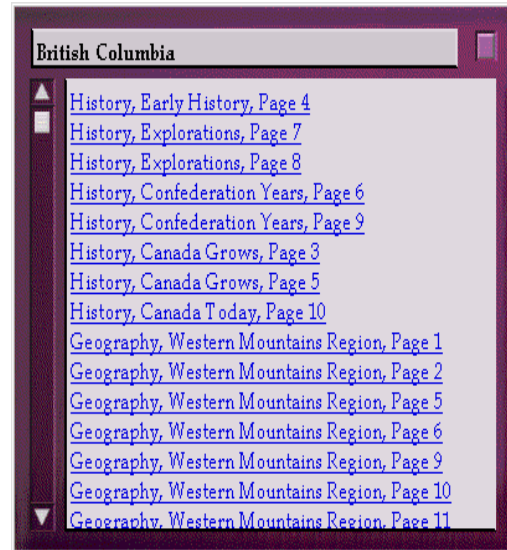
*A dictionary definition window*

**INDEX**

The index consists of alphabetical listings of entries (keywords) such as names, events, things, and places that are referred to in Explore Canada. Each entry is linked to all the occurrences of that entry. To look up an entry, click on the letter of the alphabet that the word you are looking for begins with. For example, if you are looking for information on British Columbia, click on the letter **B** (see picture) for listings which begin with the letter B and then click on **British Columbia**.

Once you click on the word, another window will pop up containing all the references to that word (see picture). In the new version of Explore Canada, all these references are linked to the actual presentation screens in which they appear, but in the old version, you need to actually quit the index and go to the section and the page in which that entry appears.

Use Tips in the index window for a quick tutorial on how to use the index. Learners can use it as follow-up to the instructor's lesson. Clicking anywhere in the **Tips** window skips the tutorial



*Index of references to British Columbia*



## What is Explore Canada?

Explore Canada is a multimedia educational program about the history and geography of Canada.

The features in this section build on those discussed in previous levels. If you are new to Explore Canada, we recommend that you read the Explore Canada sections in previous LINC levels before reading this section.

## Features

### LEVEL 2 PRESENTATION WINDOW

Level 2 expands the presentation of Level 1. The text is longer and has no audio. The vocabulary is more advanced, but like Level 1, hyperlinked to the dictionary.



Level 2 Presentation Window

#### Sections of a Presentation Window:

**Level button:** to go to Level 2, you can either drag the Level button to position “2” or select “Level 2” at the bottom of the Level 1 screen.

**Page number:** click on the page number arrows to move to the next or previous presentation in Level 1.

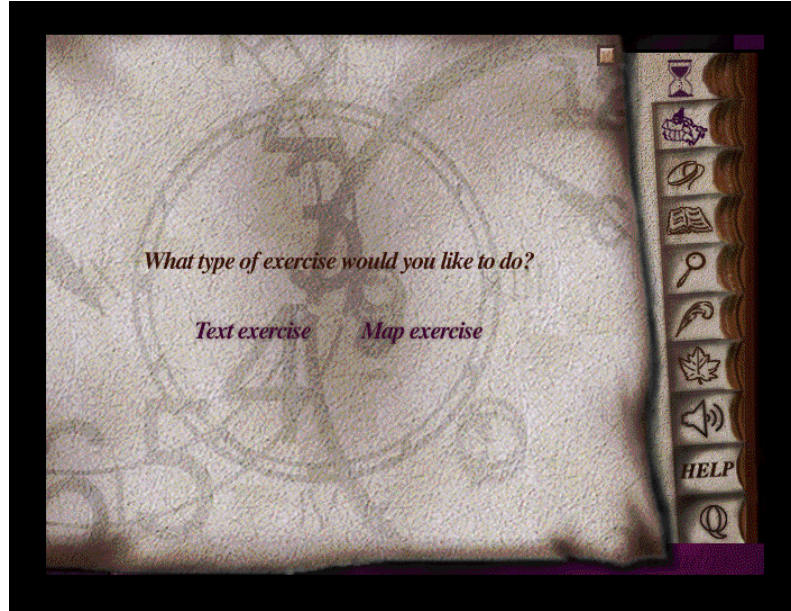
**Tips:** click on Tips for a brief tutorial of the features in a presentation window. Click anywhere to get back to the presentation window.

**Main:** click on Main to return to the History or Geography Main Menu.

**Fact:** click on Fact to see a list of additional facts about that section. You get the same list for all the presentation windows in a section).

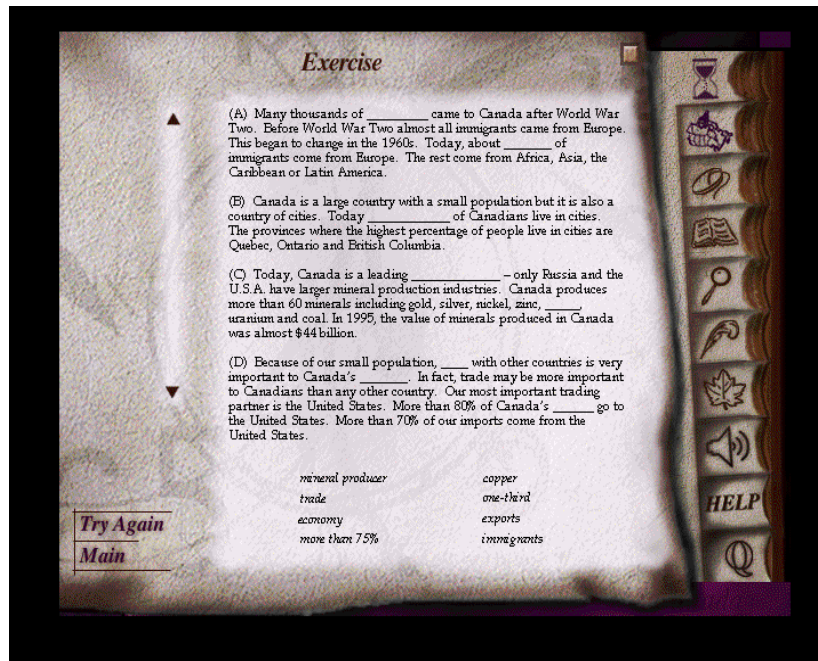
**Exercise:** there are two exercises: Text exercise and Map exercise.

# 4 • EXPLORE CANADA



Exercise Main Menu

Text exercise has gapfill sentences where the correct answer has to be dragged from a list of answers at the bottom of the screen. Clicking on **Main** will take you back to the Exercise Main Menu. To repeat an exercise, click on **Try Again**.



Text exercise

In Map exercise, pictures are dragged to the matching locations on a map or to matching sentences. Clicking on **Main** will take you back to the Exercise Main Menu. To repeat the exercise, click on **Try Again**.

Incorrect choices will be rejected in Text and Map exercises. Even if a learner does not know the correct answer, he or she would by trial and error be able to drag the correct answer to the right place.



Map exercise

## What is Explore Canada?

Explore Canada is a multimedia educational program about the history and geography of Canada.

The features in this section build on those discussed in previous levels. If you are new to Explore Canada, we recommend that you read the Explore Canada sections in previous LINC levels before reading this section.

## Features

### GO TO

This feature is helpful when you want to jump to a specific page in a presentation screen. For example, if you are in page 4 and need to jump to page 12, click on the **Go To** button (under the Quit button) on the Vertical toolbar. A box pops up asking you to enter the page number you wish to jump to. Key in 12 and click **OK**.



### ABOUT CANADA

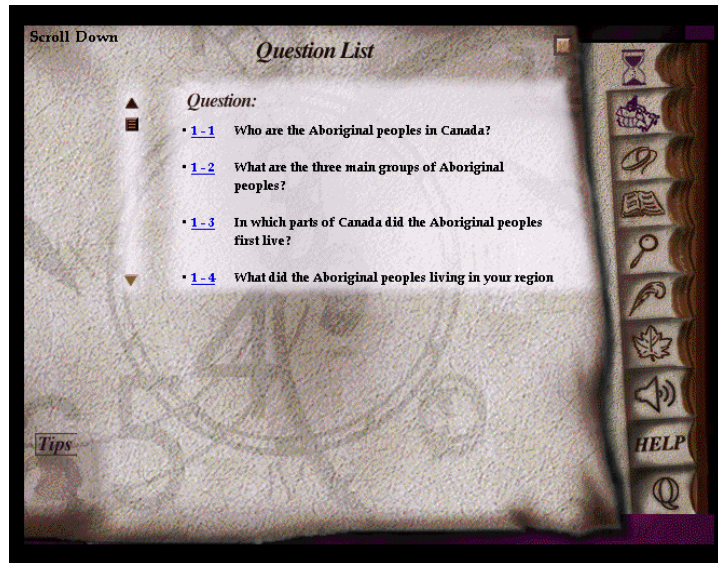
This feature, which allows the learners to study for the Citizenship test, consists of two sections: Question List and Practice Test. Clicking on About Canada on the Vertical toolbar will take you to the main menu in which you can choose one of the two available options:

#### ■ Question List

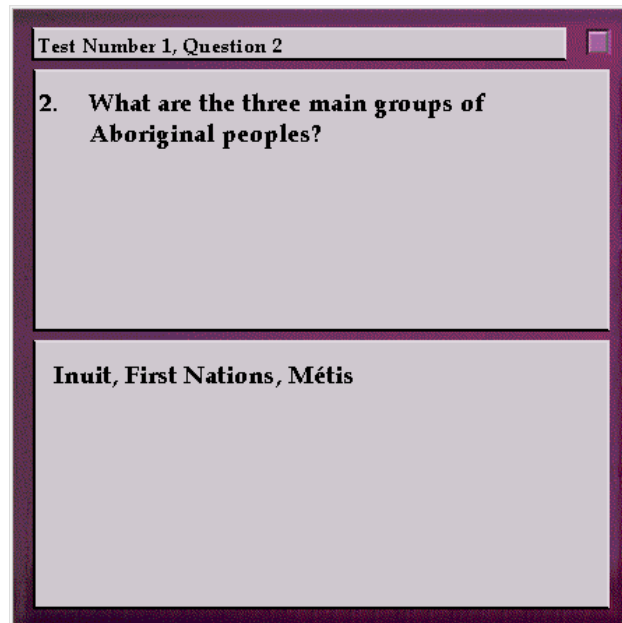
This section consists of a list of citizenship questions in 11 categories. Each category consists of several questions. You can scroll back and forth between the questions in the categories. Every question number is underlined.

# 5 • EXPLORE CANADA

Clicking on an underline provides a link to the answer.



For example, clicking on [1-2](#) in the Question List will pop up the answer.



## ■ Practice Test

This section consists of the same questions as in the Question List in 11 categories but the questions appear one at a time with a practice window for the learner to write an answer. An explanation of the Practice Test screen icons follows:

- **Tips**

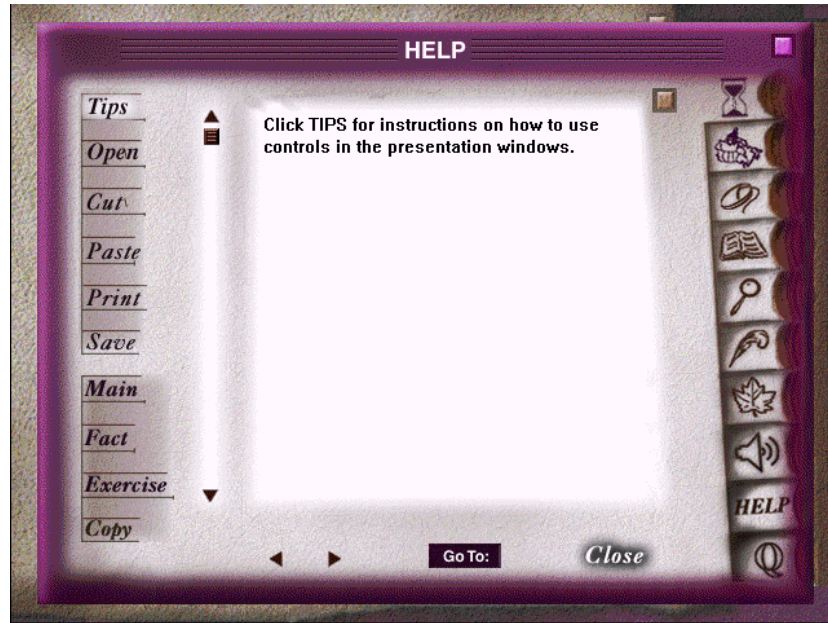
Clicking on this icon provides you with tips for a presentation window. It has the same function as the Tips in the Presentation Window discussed in LINC Two level

# 5 • EXPLORE CANADA

## HELP

Help provides written explanation for all the functions on the Vertical toolbar, in the Writing Pad, and the presentation windows. To access Help, click on the Help icon on the Vertical toolbar. You will notice three sets of icons:

- **Writing Pad (Tips, Open, Cut, Paste, Print, Save)**  
The icons in the top left section of the Help screen explain the functions that are available in the Writing Pad.
- **Presentation Window (Main, Fact, Exercise, Copy)**  
The icons in the bottom left section of the Help screen explain the functions available in presentation windows.
- **Vertical Toolbar**  
The icons in the Right section of the Help screen explain the functions available on the Vertical toolbar.



You can activate Help anywhere in Explore Canada. When you click on an icon in the Help window, a detailed explanation for that icon will appear on the help screen. Clicking on the Close button or  on the top right corner of the Help screen will close Help.