

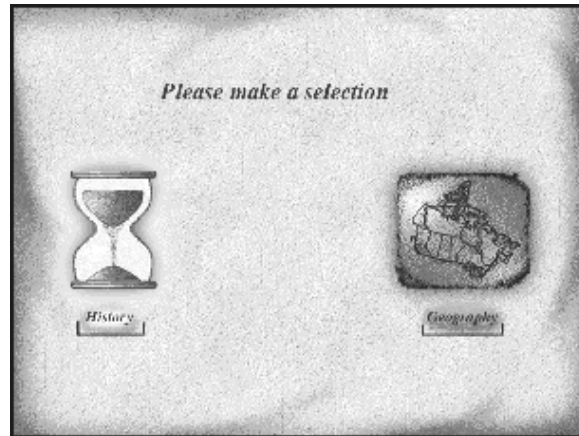
What is Explore Canada?

Explore Canada is a multimedia educational program about the history and geography of Canada.

Features

MAIN MENU

There are two main menus in Explore Canada: **History** and **Geography**. The History and Geography topics are divided into sections that cover historical periods and regions of Canada.



Explore Canada Topics

■ **The History Main Menu** consists of the following six sections:

- Early History
- Colonial Period
- Canada Grows
- Explorations
- Confederation
- Canada Today



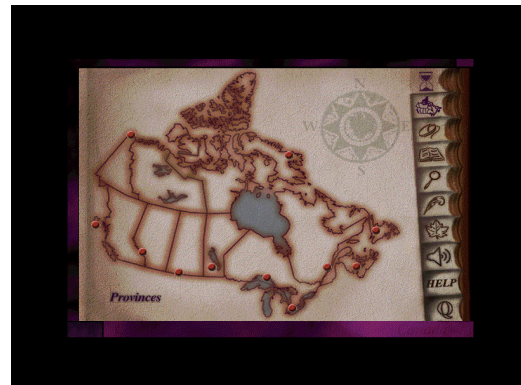
History Main Menu

The Geography Main Menu has two sections:

Provinces and Regions.

■ **The Regions (default) section** consists of the following six subsections:

- Western Mountains
- Prairies
- Canadian Shield
- St. Lawrence Lowlands
- Atlantic
- Arctic



Geography Main Menu

1 • EXPLORE CANADA

■ **The Provinces section** can be accessed by clicking on Provinces on the lower left corner of the Geography Main Menu and consists of the following subsections:

- British Columbia
- Alberta
- Saskatchewan
- Manitoba
- Ontario
- Quebec
- New Brunswick
- Nova Scotia
- PEI (Prince Edward Island)
- Newfoundland
- Nunavut (new Explore Canada version only)
- NorthWest Territories
- Yukon



Provinces Main Menu

PRESENTATION WINDOW

Clicking on any of the above sections will take you to a **Presentation Window** that has text at two levels of difficulty: **Level 1** and **Level 2**. For detailed explanation of a presentation window, see LINC Two.

Explore Canada comes with Tutorial, Mouse Tutorial, and a variety of features such as Dictionary, Help, Index, a text editor called Writing Pad, and a feature called About Canada. Each of the above features is represented by an icon on the vertical toolbar area on the right side of any window. As your mouse points to an icon, the name of that icon appears on the top left corner of the screen. We will explain how each icon works in the coming LINC levels.



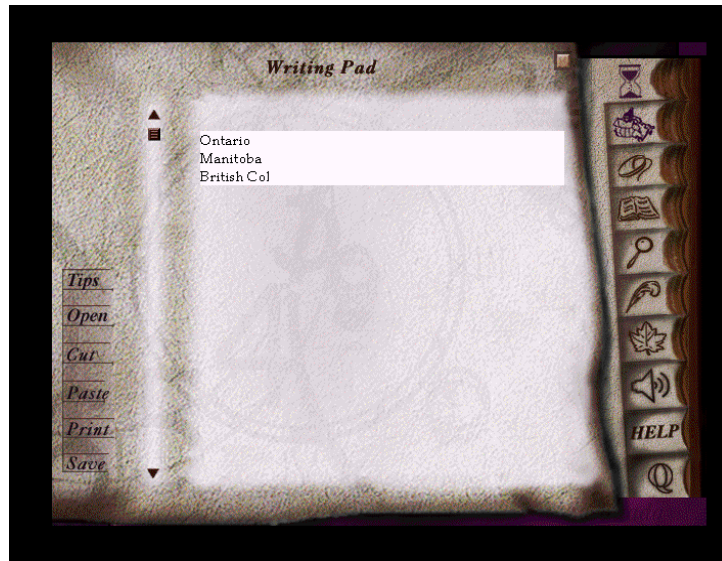
A Presentation Window

WRITING PAD

The Writing Pad is a simple text editor that can be used as a blank sheet to:

- copy text from any presentation window
- import text (copy text to the Writing Pad from Word)
- create text by typing.

To access Writing Pad, click on the Feather icon on the vertical toolbar (see picture). Once you have copied, imported, or created text, you need to save it in order to be able to use it again, just as you would in a word processor such as Word.



Writing Pad

MOUSE SKILLS

To work with Explore Canada software, learners need to learn how to move the mouse (point), select an option (click), and drag an item (drag). In LINC One, however, learners need to master pointing and clicking only. When the mouse is moved over the menu items in the History or Geography main menu windows, or when it is moved over the options on the vertical toolbar, an option will be highlighted. A good activity for learners to practise is moving the mouse to a specific area of the screen to reveal the names of the menu items.

1 • EXPLORE CANADA

How to use Explore Canada with LINC One learners

At this level, learners need to become familiar with instructions to open and exit the program, the main menus (History and Geography), the names of each section in the menu, the Writing Pad, and using the mouse. The Skills Checklist at the end of this section provides step-by-step instructions for the above functions in the program.

To learn the names of the parts of the screen, several tools can be employed:







1. The mouse, for pointing to (and thus highlighting) the regions or provinces in the Geography Main Menu and periods in the History Main Menu.
2. The Writing Pad, to practise the spelling of the words learned in each section.

Suggested activities:

The following activities relate to the Canadian Society units (Geography of Canada and History of Canada) in the LINC One Curriculum Guidelines.

1. Open **Geography | Regions**. Have learners point to the Regions (highlight regions), read the name out loud.
2. Repeat Activity 1 for **Geography | Provinces**.
3. Repeat Activity 1 for the six periods in the History Main Menu.
4. Learners type Canadian province names from a list in the Writing Pad.
5. Learners type province abbreviations next to each province name in Activity 4.

Skills Checklist for Learners

Function	How to...
Open Explore Canada	Click Start Programs Explore Canada Histwin_95 .
Open the new version of Explore Canada	Click Start Programs Explore Canada Explore.exe .
Exit Explore Canada	Click  . Click Yes .
Open History Main Menu	Click 
Open Geography Main Menu	Click 
Open Writing Pad	Click 
Navigate between windows	Click on any icon on the Vertical toolbar, e.g., Writing Pad, History, or Geography.
Writing Pad	
Open	Click 
Insert text	Place cursor where you want to type text. Start typing.
Delete text	<ul style="list-style-type: none"> ■ Use Backspace to delete characters to the left of cursor. ■ Use Delete to delete characters to the right of cursor.
Save file	Click Save in Writing Pad Window. In the Save in box, select folder. In the File name box, enter file name. Click Save in the dialog box.
Mouse Skills 	
Point	Move mouse on screen until <ul style="list-style-type: none"> ■ the desired area is highlighted or ■ the tip of the mouse pointer is on the desired text or image.
Click	Press and release the left mouse button once.