

What is ELLIS Master Pronunciation?

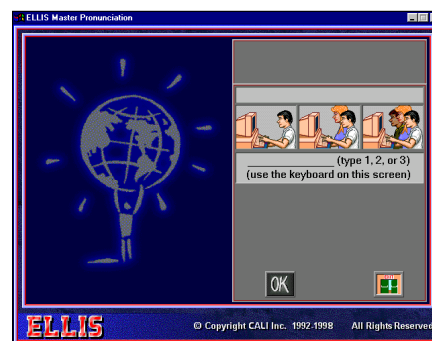
ELLIS Master Pronunciation is a multimedia program to help learners improve their listening comprehension, correct their pronunciation, and reduce their accents. The program has five sections: **Pronunciation**, **Minimal Pairs**, **Speech Acts**, **Master Tutor**, and **Tongue Twisters**.

The LINC One part of this guide gives a brief description of the main menu, followed by a detailed explanation of the Pronunciation section.

Features

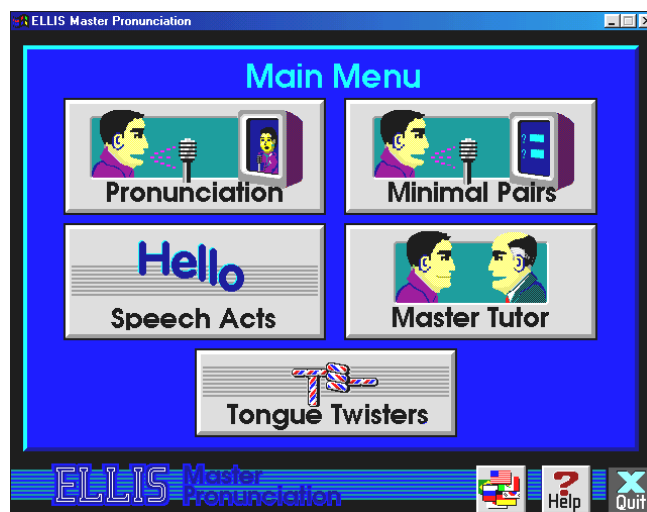
LOG-IN SCREEN

Learners must log into Master Pronunciation. This program does not keep user records, so learners need only type **1**, **2**, or **3** to indicate how many learners are using the program, and then click the **OK** button.



MAIN MENU

- Master Pronunciation consists of the following five sections.
- **Pronunciation**
Displays how sounds are pronounced by male and female models, with animated graphics showing where to place the tongue, teeth, and lips to pronounce each sound. Learners can choose either vowels or consonants to hear, see, and practise. They can also record themselves and compare their voices with Master Pronunciation.
- **Minimal Pairs**
Learners hear a word, and choose which word they have heard. They can replay the words to compare the sound differences and they can also record their voices to compare them with Master Pronunciation. They can choose activities for their language background, a random selection, or specific sounds to practise.
- **Speech Acts**
Provides mini-dialogues. Learners can practise common phrases and learn appropriate responses. Themes include Social Interactions, Dealing with Language Problems, Getting Things Done, and Conversing.



1 • ELLIS MASTER PRONUNCIATION

■ **Master Tutor**

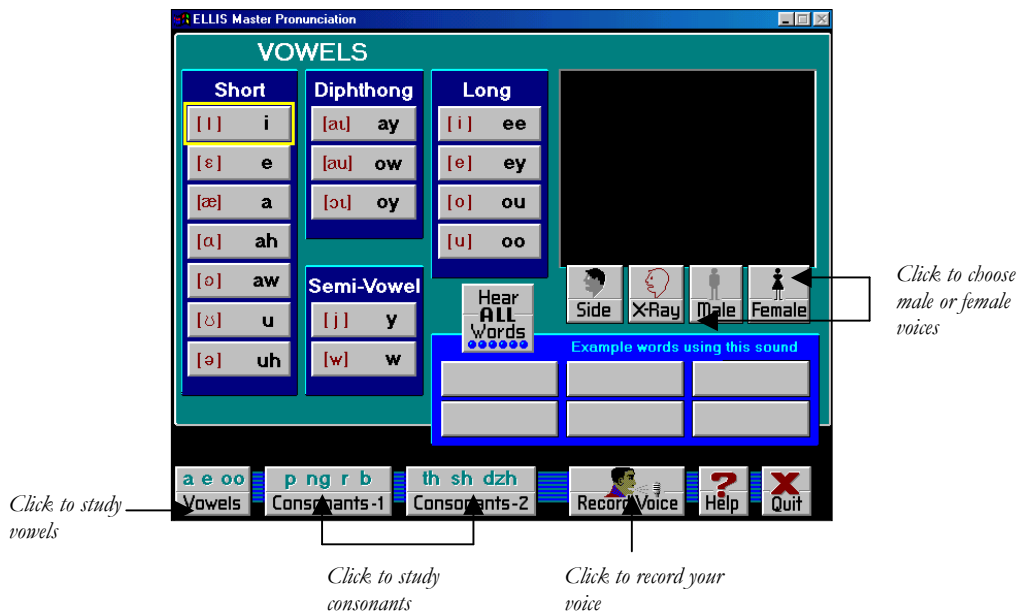
Offers explanations of correct pronunciation of English sounds. The explanations are in English or the learner can choose an explanation in another language (28 available).

■ **Tongue Twisters**

A game in which learners record the tongue twister and compare their attempts with Master Pronunciation.

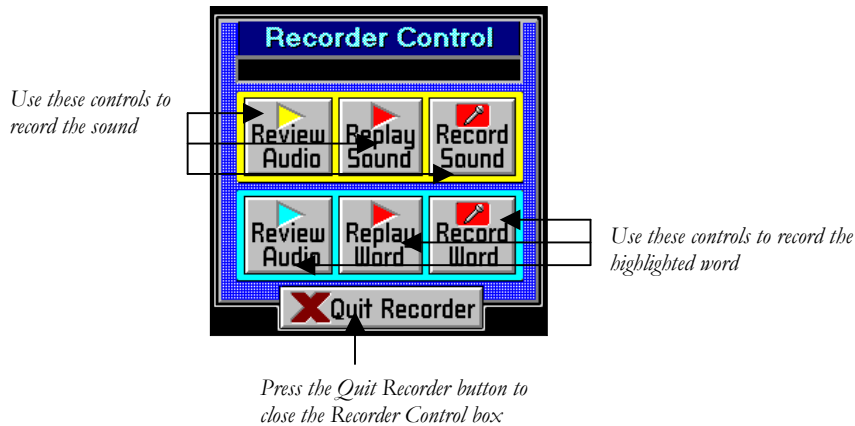
PRONUNCIATION WINDOW

In the Pronunciation activity, learners select vowels or consonants, specific sound(s), and words containing those sounds to hear, see, and practise.



RECORDER CONTROLS

Clicking on the Record Voice button opens the Recorder Control box below.



How to use Master Pronunciation with LINC One Learners

We recommend that only the Pronunciation section be used with LINC One learners. At this level, learners need to know how to open the program, select the Pronunciation menu, choose sounds to practise, and close the program. In addition, they need to know how to record their voices and compare with Master Pronunciation. Since this program familiarizes learners with the recorder controls, we suggest it be taught before ELLIS Intro. The Skills Checklist at the end of this section provides step-by-step instructions on how to access the above functions in the program.

Introduce the use of this program by having learners gather around one computer and demonstrate the activity. When demonstrating the Record Voice feature, caution learners not to switch too quickly between Record and Replay. The button you are pointing to must be highlighted before you click. The highlight indicates the program is ready for the next command. Clicking before that results in no action because the computer is busy finishing the last command.

For easy reference, use wall charts outlining the instructions for Master Pronunciation activities. Prepare a sheet that has columns for the consonants or vowels being practised, words containing those sounds, which learners could copy from Master Pronunciation, and a column where learners could indicate whether the sound was easy or difficult. Learners could go back to practise sounds they find difficult in future lessons.

Assign specific sounds to practise, based on learner need or the vocabulary currently being studied, and prepare a task for learners to complete during or after their ELLIS Master Pronunciation session. (See the suggested activities that follow.) Use the Pronunciation activities as a warm-up activity, not as an activity for a whole computer lab session.

Suggested activities

1. As a follow-up, have learners fill in a table of the following information: sound (use phonetic symbol or letter combinations) and words (containing that sound). Have learners refer to pictures or text about the theme you are studying to find words with the assigned sound. For example, if you are studying housing, provide materials on rooms and furniture.
2. After using Master Pronunciation, assign a sound and have learners, in pairs, write as many words as they can, using that sound

1 • ELLIS MASTER PRONUNCIATION

Skills Checklist for Learners

Function	How to...
Open ELLIS Master Pronunciation	Click Start Programs ELLIS Master Pronunciation .
Log-in	Type 1, 2, or 3 for the number of users at this session. Click OK .
Return to Main Menu	Click Quit .
Exit ELLIS Master Pronunciation	Click Quit .

Mouse Skills

Point	Move mouse on screen until the desired area is highlighted.
Click	Press and release the left mouse button.

Pronunciation

Open Pronunciation	Click Pronunciation on the main menu.
Locate a sound	Click Pronunciation Vowels or Consonants 1 or 2 Sound .
Hear words that contain the selected sound	Click Hear ALL Words .
Hear the sound produced by a male voice	Click Male .
Hear the sound produced by a female voice	Click Female .
See/hear an animation of how the sound is formed	Click X-ray .
See/hear a video of the sound	Click Side .
Record sound and hear it	Click Record Voice Record Sound Replay Sound .
Return to Main Menu	Click Quit .